

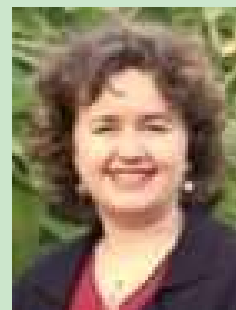
Autumn 2010

12 Home Farm  
Loseley Park  
Guildford, GU3 1HS

# Newsletters

THE NEWSLETTER FROM THE PLANT HERITAGE NATIONAL OFFICE

Six months maternity leave go by awfully quickly, possibly because you spend at least the first two in a haze. But it was all worth it as Giselle is a delightful addition to the family (and for those of you who recall Luc's birth, he started school in September – where does the time go?)



Genevieve Melbourne Webb  
Executive Officer

Back in the saddle on 1 July, I was at the Hampton Court Palace Flower Show Press Day on 5th July, meeting James Wong who opened our marquee and Alan Titchmarsh who also came along. Our Plant Heritage marquee looked extremely good, resulting in a segment in the BCC coverage on Thursday night when Matthew Biggs was interviewed about the central feature "Vanishing Garden".

The hard work of our volunteers at all the flower shows is very much in evidence and I thank you all for helping us to keep disappearing plants on the agenda .



The Vanishing Garden



The new demonstration area at Hampton Court which was a roaring success with gardeners

## Stop Press

Plant Heritage has been granted Scottish Charitable status by the Office of Scottish Charity Regulator.

This means that we are now compliant with the 2005 Scotland Act and have a Scottish charity number of SC041785.

# Fundraising and shows

## Chelsea cloakroom 2011 – we are on for another year!

*“Luggage storage, shopping drop and picnic parking area”*

We received confirmation from the RHS that Plant Heritage will be running the Chelsea Cloakroom next year – a fourth year!! What Fun!! So please let Suzy Hughes know (email [suzyhughes@businessetiquetteint.com](mailto:suzyhughes@businessetiquetteint.com)) if you are interested in helping out. The rota is now active!



Joanna Jones  
Fundraising

## Music Magpie Collection of CD albums and DVDs

Have you got unwanted CD Albums and DVDs? Please consider giving them to Plant Heritage so that we can send them to Music Magpie who recycle them. Each item raises 50p for plant conservation.

Please get in touch with Joanna Jones to discuss collection – perhaps you could collect them on behalf of your local group?

So why not ask everyone to bring a CD to your local AGM? And if each group collected 100 – that would be £1,750 for your old CDs and DVDs that might otherwise just go to a jumble sale (or the bin).

Please note: the CD must still be in its sleeve (and therefore contain a barcode). No newspaper freebee promotional CD/DVDs are taken, and CDs must be albums.



## Gift Membership Special Autumn Offer Free seeds\* and cards

Looking for a gift for a friend? Why not buy a Gift membership of Plant Heritage – an ideal birthday or Christmas present.

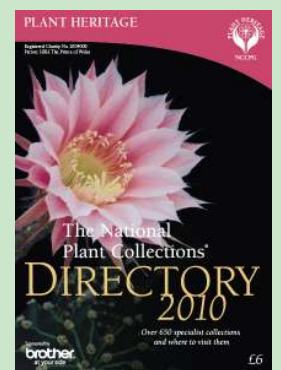
Our Gift membership pack includes the National Plant Collections® Directory 2010, our Autumn Plant Heritage Journal as well as a pack of 8 Jane Howell notelets and two packets of Johnsons seeds\*. All for £25.00 for one year.

As you know they will join one of our local groups, offering plant fairs with rare and unusual plants, talks, workshops, visits to gardens and Collections in their local area, as well as the opportunity to join in with activities elsewhere in the country when they are visiting or on holiday.

We can send the new membership pack directly to the recipient, or we can send it to the buyer – just let us know your preference.

Please ring 01483 447540 and ask for Membership. Alternatively you can download a form on our website [www.plantheritage.com](http://www.plantheritage.com). Choose the tab 'Support Us, then 'Become a member'. This offer is valid from September to December 2010.

\* Seeds may differ from those illustrated.



## 2010 Annual Raffle

Please look out for your Raffle tickets enclosed in your Autumn mailing. If you have never bought a ticket before, now is your chance! All monies raised do make a difference to the continuation of our work. This year's wonderful prizes include

- £350 from HATTS QUALITY TRAVEL
- NFU Mutual's weekend Farmstay (choice of location) for 2
- 4 x fabulous garden tours c/o NGS Garden Days Out from Gardens Etc
- £150 gift vouchers from Squires Garden Centres
- BOSCH cordless secateurs (worth £60)
- BROTHER handheld plant labelling machines

**BOSCH**

**HATTS GROUP**  
QUALITY *Travel* EST. 1928



**brother**  
at your side



**NFU Mutual**

**SQUIRES**  
GARDEN CENTRES



### In memoriam

A gift in memoriam of a relative or friend can mean so much at a time of deep sadness. And for many people, a donation towards the valued work of Plant Heritage and the National Plant Collections scheme seems a better and more lasting tribute than sending cut flowers.

For example, instead of buying flowers for a funeral send a donation; or arrange a donation on a special date each year to remember your relative or friend. All contributions are so appreciated, no matter how small.

## Where do you find your plant information online?

Do you have any views on the resources available on line for gardeners? If so, please take a minute to complete a survey on the website which we are collating in partnership with RHS and HPS members.

[www.nccpg.com/Info-centre/Growing-Heritage/Survey.aspx](http://www.nccpg.com/Info-centre/Growing-Heritage/Survey.aspx)

## Where shall we host the next AGM?

At July's Council meeting, where all the Groups meet up to discuss national matters, I put out a plea for a Group to host the 2012 AGM.

By the middle of August, I had offers for at least the next three years. So if you fancy a visit to interesting gardens and collection holders with good company and several dinners, can I recommend:

2012 North West

2013 Hampshire

2014 Norfolk

Don't forget, 2011 is in Sussex – full details in the next Plant Heritage Journal or you can download the application form from the website: [www.nccpg.com/Events/2011-AGM---May-27-29.aspx](http://www.nccpg.com/Events/2011-AGM---May-27-29.aspx)

# Membership

## Special Offers on Books

Buy a *Geum* book (£8.90) or *The Thyme Handbook* (£11.30) and get another book of your choice free\*: *Cistus*, *Dianthus*, *Kalmia*, *Lathyrus*, *Lonicera*, *Origanum*, *Polemonium*, Russell Lupin, *Vireya* *Rhododendrons* and *Yucca*. See more details of these books in our website shop.

(\*not including *Geum* or *The Thyme Handbook*. Offer expires March 2011).

Order by ringing the office on 01483 447 540 or sending a cheque made payable to NCCPG stating which free book you would like. (All prices include post & packaging.)



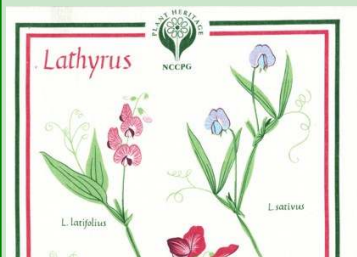
Gillian Spencer Gill Groombridge  
Membership

## New Products (just in time for Christmas!)

We now have some new products for sale through the shop on our website:

Showa Gloves, Small, Medium, Large	£6.99
Irish Linen tea towels featuring the Lathyrus Collection	£4.50
Jaci Hogan cards; pack of three different Agapanthus designs	£2.50

(Prices include postage and packing)



You can buy these in the merchandise section of our website shop or send a cheque payable to NCCPG to our Loseley office.

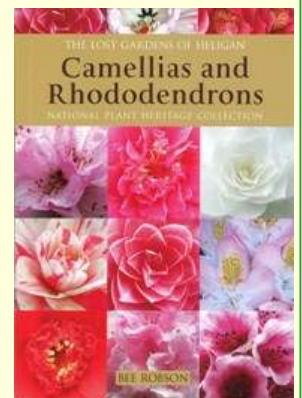


## Special Offers for Members

### The Lost Gardens of Heligan, Camellias and Rhododendrons by Bee Robson (2010)

An attractive book on the old camellias and rhododendrons found in the Lost Gardens of Heligan, which became a National Plant Collection in 2007. Bee spent nine years identifying the plants, researching their provenance and propagating from them.

Available from Heligan for £15.90 (includes postage), our members can buy it for the special ALL IN price of **£9.95** while stocks last. Please send a cheque payable to NCCPG to our Loseley address or buy through the website [www.nccpg.com/Shop](http://www.nccpg.com/Shop) Offer ends 31<sup>st</sup> October 2010



**Capel Manor Gardens** in Enfield, just inside the M25, is offering members '2 for 1' entry to its gardens in October 2010. See the News section on our website for full details:

[www.nccpg.com/News/Take-a-friend-for-free-to-Capel-Manor-Gardens.aspx](http://www.nccpg.com/News/Take-a-friend-for-free-to-Capel-Manor-Gardens.aspx)

# Public Relations

The website continues to expand with topics and pages. The latest features are a Book Review section and a Members' Publications section. Both have links through to online bookseller, Amazon; a little commercial perhaps, but any books purchased through Amazon using these links provides us with a modest commission at no cost to the purchaser.

So if you would like to review one of your favourite books or indeed, have written a learned or lighthearted publication, please let me know.

Another feature I hope will be of interest to Members is the Special Offers page – a listing of events and activities for which we have been offered or negotiated a discount for Members. If you'd like some publicity for an event or product which might interest Plant Heritage members and can offer a special rate, please send me the details – [profficer@plantheritage.org.uk](mailto:profficer@plantheritage.org.uk).



Nicola Savage  
PR Officer

Tell the Trustees what you think of the new website by completing the Survey which can be found on the front page.

[www.nccpg.com](http://www.nccpg.com)

# Threatened Plants Project

The workshop format is now being finalized for those booked for later this month. This is not set in stone, however, and can easily be adjusted to allow for different regional requirements. 7 workshops are already booked with 2 more pending.

Some new cultivars appear to be with us for only one year before they appear on the RHS Last Listed list but there are also some genera already listed where it appears there are no plants threatened at this stage. Some of the more intriguing plant names include **Chrysanthemum** 'Primrose World of Sport' and **Galanthus** 'Nothing Special'; neither of which would inspire me to buy the plant but I'm sure there is a reason for the choice of such names. **Linaria purpurea** 'Canon Went' is still widely available but the dwarf variety has gone or should one say went in 1995! However, all is not lost because there is a new plant listed this year called **Linaria purpurea** 'Canon Came'.

I'm looking forward to feedback from the workshop sessions in order to improve the content and will report back next time round.



Sarah Barton  
TPP Co-ordinator

# Conservation



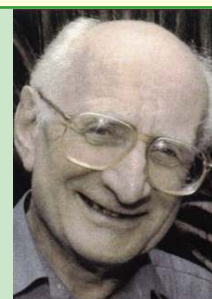
Mercy Morris  
Plant Conservation Officer

Looking a little further afield this autumn, there are two items that I feel are well worth bringing to your attention. The first is [www.plantsfortheplanet.com](http://www.plantsfortheplanet.com) where you can add your name to support the Global Strategy for Plant Conservation, something that we are all part of in a small way.

The second is the battle to save the Pavlovsk Research Station in St Petersburg, Russia which is threatened with being demolished to make way for housing. This is an old and possibly irreplaceable resource, holding a vast collection of crop genetic material. An internet campaign has so far given the station a stay of execution, but it is not yet safe, read more here: [www.croptrust.org/main](http://www.croptrust.org/main)

## Ken Ashburner

Very sadly on the 20<sup>th</sup> July, we lost Ken Ashburner; collection holder of *Betula* and *Alnus* at Stone Lane Gardens since 1994. He will be much missed by friends, family and plantsmen. It is understood that his book on birch will be completed posthumously by his co-author and be published next year.



## 2011 Directory

A reminder for Collection holders, we won't be sending out a mass mailing of Directory forms this year. So please make a point of letting us know if you have any changes from last year either by downloading a form, completing the details online or phoning the office on 01483 447540.

Download a form:

[www.nccpg.com/National-Collections/Collection-Holder-Resources.aspx](http://www.nccpg.com/National-Collections/Collection-Holder-Resources.aspx)

Complete online details:

[www.nccpg.com/National-Collections/Collection-Holder-Resources/Directory-information-and-contact-details.aspx](http://www.nccpg.com/National-Collections/Collection-Holder-Resources/Directory-information-and-contact-details.aspx)



### Directory information and contact details

If you would like to update your contact details and your Directory entry for next year, please do so here  
The boxes that you have to fill in are marked 'required', the others are optional. The details are automatically emailed to Plant Heritage, and you will be sent an email to confirm this.